



**IntelliCom develops products and solutions for
M2M (Machine 2 Machine) and Telemetry.**

**With customers in more than 40 countries, IntelliCom
solutions are serving all kinds of applications.**

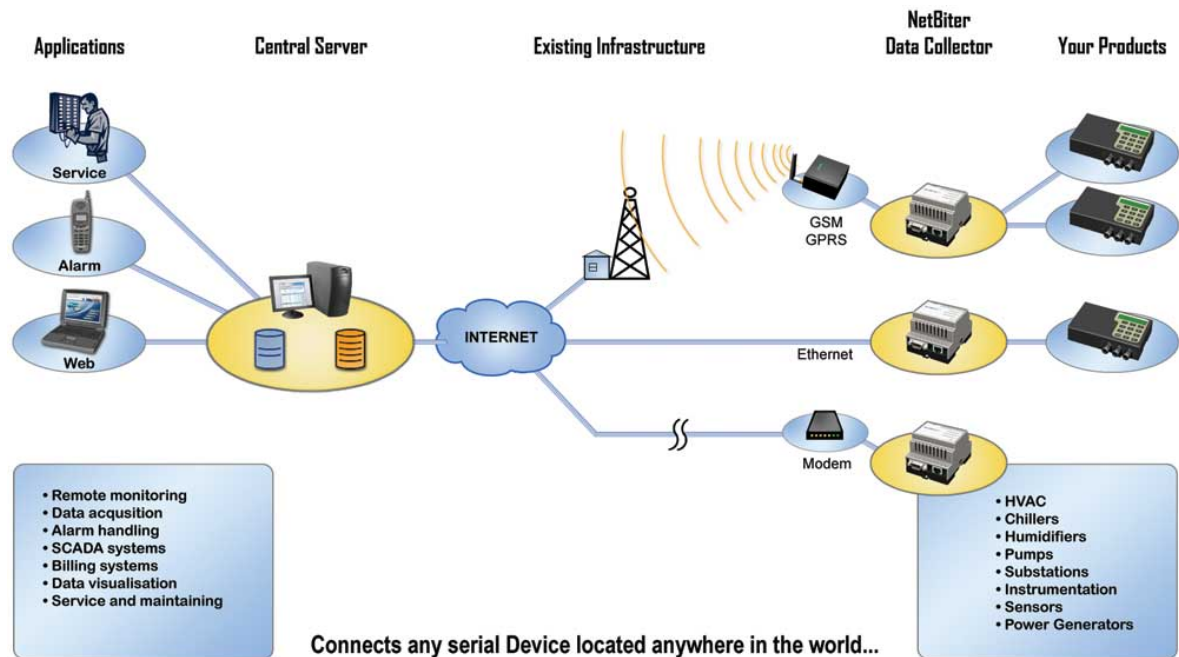


**The NetBiter® M2M Concept is a powerful
turnkey solution that is scalable from a
few devices to many thousands of devices.**

The NetBiter® M2M solution

With our NetBiter® M2M solution you can network-enable devices anywhere in the world and integrate them into the enterprise. At anytime you can access critical information about operational status, diagnostics, service requirements, alarms etc.

Or just simply monitor and control devices and automation processes easy and secure from your office, hotel room or at any location of your choice.



The NetBiter® M2M concept is a powerful turnkey solution that is scalable from a few devices to many thousands of devices. The concept includes hardware data collectors in the field to forward any data to a central server. The system is fully open and can take advantage of existing infrastructure like GSM, GPRS, Internet, Satellite etc.

At the central server different interfaces are offered, like databases, web portals etc. As the system is based on open components, customers are not dependent on IntelliCom to perform modifications or additions of functionality.

At least but not last, stay in control of the cost as there is no license or royalty structure.

Examples of installations:

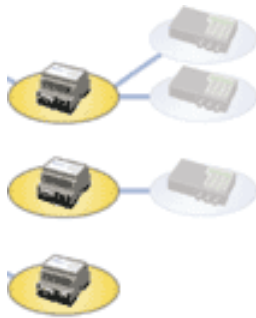
USA	Vending machines
Canada	Oil and Gas
Germany	Automatic Meter Reading
Turkey	Weather stations
USA	Refrigeration
Canada	Humidity control
Israel	Water treatment
Sweden	Power distribution



Relax! Let the NetBiter® M2M system do the job.

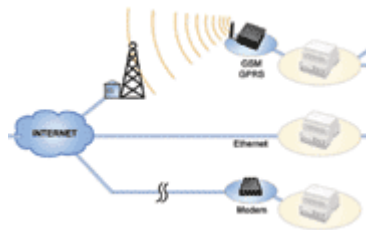
NetBiter® M2M Building Blocks

Field level



- The NetBiter® Data Collector connects your devices or a network of devices in the field to common infrastructure.
- Interface methods:
 - Serial ports RS232, RS485
 - Ethernet
 - I/O (digital / analog signals)
 - Modbus
 - LonWorks
 - Profibus
 - CAN etc

Infrastructure level



- Interface between field devices and the central server.
- The purpose is to forward any data to the Internet.
- Supports:
 - GSM, GPRS, 3G
 - Ethernet / Internet
 - Analog Telephone Modem
 - xDSL
 - Satellite etc

Central Server level



- Provides data and applications to the users.
- Administrates users, projects, devices and data.
- The NetBiter® Server Suite web portal offers:
 - Administration
 - Monitoring and control
 - Alarm handling
 - Data logging etc

NetBiter® Server Suite - web portal

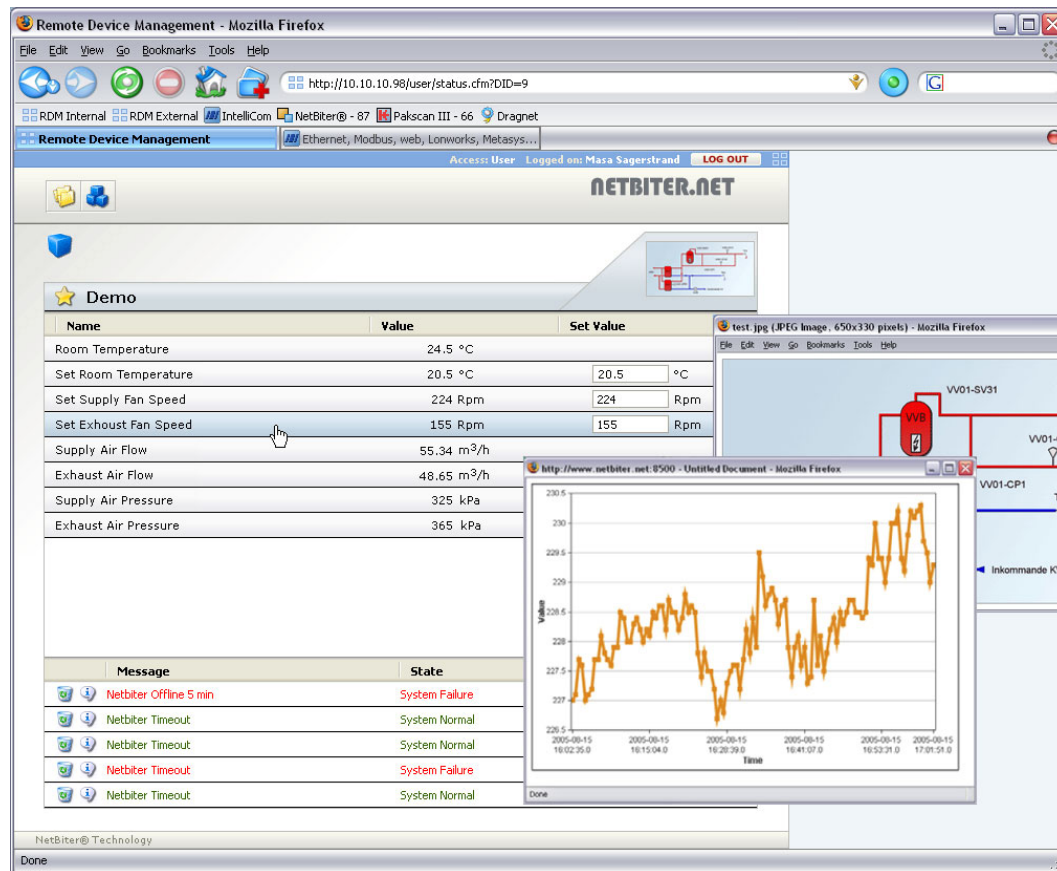
As part of the Server Suite, a complete web portal package is offered. Everything is based on web and the user simply clicks the way through web pages to build a central server web portal. It includes for example:

- | | |
|------------------------|--|
| • Administration | Administrate and maintain users, projects, devices and data. |
| • Monitoring & Control | Monitor and control selectable data. |
| • Alarm handling | Administrate and maintain alarms by email, SMS etc. |
| • Data logging | Log selected data and view any parameters as a trend graph. |

What about future modifications and new functionality?

The NetBiter® M2M concept is based on open components. The central server solution is based on Macromedia Coldfusion, making it possible for our customers to customize and extend the functionality of the web portal and integrate it with enterprise data and applications by using localized third party web developers or in-house staff.

Example of NetBiter® Server Suite - web portal



Screenshot of customer project to monitor equipment distributed all over Europe.

About IntelliCom

IntelliCom develops and sells products and turnkey solutions within M2M (Machine 2 Machine) and embedded web server applications. Founded in 1996, IntelliCom is today a mature profitable company with customers in over 40 countries.

IntelliCom has an extensive track record with customers such as:

- Rockwell Automation (USA)
- Hitachi (Japan)
- GE (USA)
- Schneider (France)
- Ericsson (Sweden)
- Compass Group (USA)
- Syntech Enerflex (Canada)
- Fuji Electric (Japan)
- Reliance (USA)
- Danfoss (Denmark)
- Metler Toledo (Germany)
- Telenor (Norway)
- ABB (Finland)
- Allen Bradley (USA)

Contact us:

IntelliCom Innovation AB Phone: +46 35 17 29 90
Pilefeltsgatan 93-95 info@intellicom.se
SE-302 50 Halmstad www.intellicom.se
Sweden

Please contact IntelliCom to learn how you can benefit from our solutions.